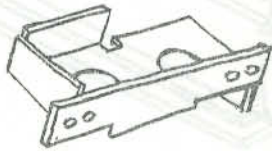


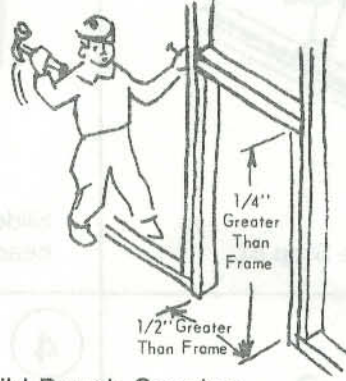
STEEL DOOR FRAME INSTALLATION DETAILS FOR WOOD STUD



ANCHOR FOR WOOD STUD CONSTRUCTION

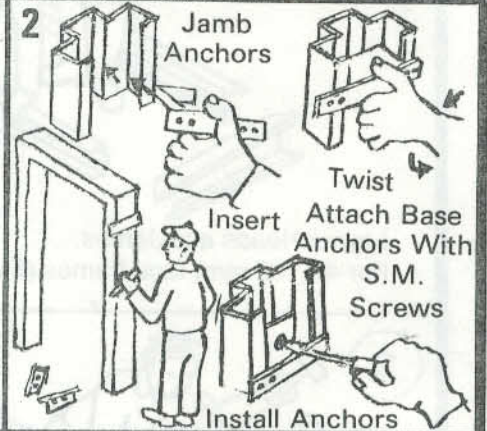
Assemble Frame Per Details
On Front

1



Build Rough Opening

2



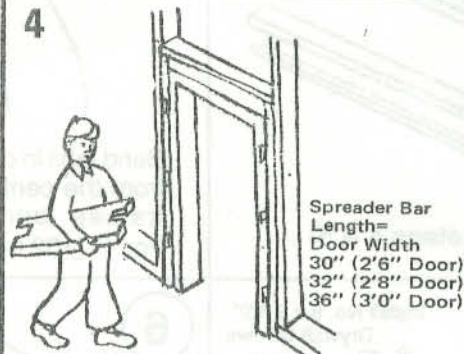
Install Anchors

3



Place Frame In Rough
Opening

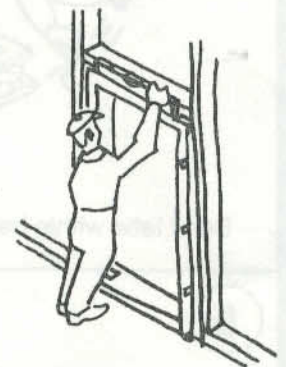
4



Place Wood Spreader
At Base Of Frame

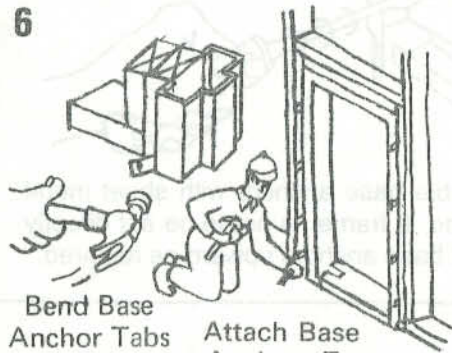
Spreader Bar
Length=
Door Width
30" (2'6" Door)
32" (2'8" Door)
36" (3'0" Door)

5



Level Head

6



Bend Base
Anchor Tabs
Around Wood
Studs. Attach Base
Anchors To
Floor Plate.

7



Place And Support Wood
Spreader At Center Of Frame

8



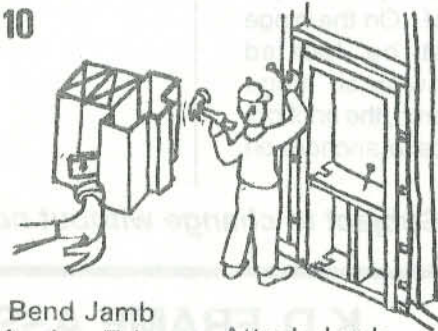
Square Corners

9



Plumb Jambs

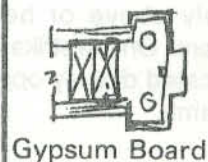
10



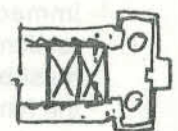
Bend Jamb
Anchor Tabs
Around Wood
Studs. Attach Jamb
Anchors To
Wood Studs.

11

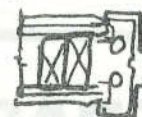
Wall Framework Is Now
Ready For Wall Finish



Gypsum Board



Plaster on
Metal Lath



Plaster on
Rocklath

Here Are
Some Typical
Wall Conditions